

## Euro Cylinder CYEU Series

### Application

INOX CYEU series cylinder is a manageable euro cylinder with keying ability suitable for commercial or residential application with specific access requirements

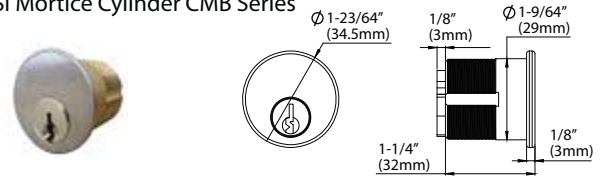
### Specifications and Features

- Standard euro profile dimension according to DIN18252
- Solid brass body and keys
- Standard SC Keyway (Schlage C Keyway) for wide compatibility
- Various lengths available for different door thicknesses
- Symmetrical and asymmetrical variants available to work with different lock installation positions
- Master keying service available upon request
- Keying ability to suite with INOX ANSI Mortice Cylinder (CMB Series) and Rim Cylinder (CRB Series)
- Construction keying ability for use during the construction phase of a building; can later be easily removed and replaced with permanent keys
- Enhanced attack resistance provided by INOX Security Escutcheons

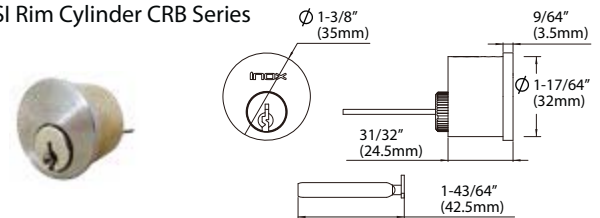


### INOX Related Products

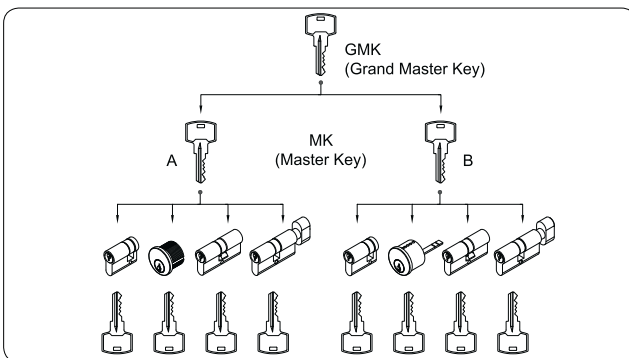
#### ANSI Mortice Cylinder CMB Series



#### ANSI Rim Cylinder CRB Series



Please refer to INOX ANSI catalogs for more information.



### Standards and Certification



Successfully type-tested for conformity to all of the requirements of EN1303:2005



Successfully passed 240-minutes fire test of metal door assemblies to EN1634-1:2014



All test performed independently and certified by Exova/Warringtonfire/Warrington APT. Test reports and/or certificates are available on request

### EN1303:2005 Classification

|   |   |   |   |   |   |   |   |
|---|---|---|---|---|---|---|---|
| 1 | 6 | 0 | 1 | 0 | C | 5 | 2 |
|---|---|---|---|---|---|---|---|

### Finishes

- Satin Nickel (SN)
- Brass Polished (BP)
- Nickel Plated (NP)
- \* Other finishes available on request

### INOX Mortice Lock Options

- MB7200 Series
- MB8500 Series
- MD7200 Series
- MD8500 Series

### INOX Security Escutcheons



EC-SE30



EC-SE35

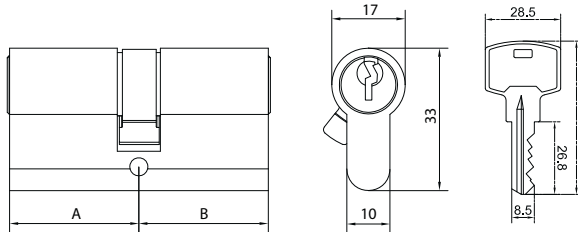
EC-SE30: Security Escutcheon for Euro Cylinder  
 EC-SE35: Security Escutcheon for Euro Cylinder with Cover Protection Rose

## Euro Cylinder CYEU Series

## Available Functions

**Double Profile Cylinder**

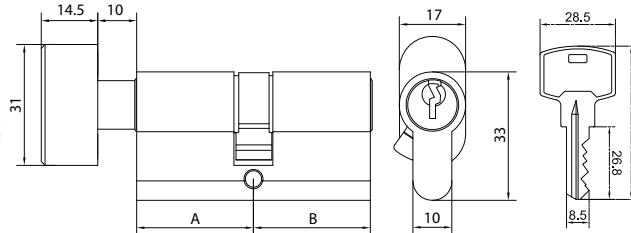
Application: Keyed operation from either side (inside or outside).



\* Dimensions in mm

**Item No**  
CYEU-3030
**Double Profile Cylinder with Thumbturn**

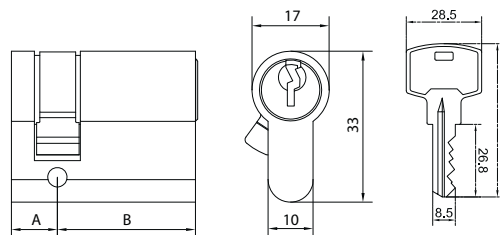
Application: Keyed operation from one side (outside) and thumbturn operated from the other side (inside).



\* Dimensions in mm

**Item No**  
CYEU-3030TK  
CYEU-3035TK  
CYEU-3535TK  
CYEU-4040TK
**Single Profile Cylinder**

Application: Keyed operation from one side (outside) only.



\* Dimensions in mm

**Item No**  
CYEU-1030  
CYEU-1035  
CYEU-1040  
CYEU-1045