

244 Twilight



Material

Stainless Steel Levers and Escutcheons

Standard Finishes

- US32 (629) Bright Polished Stainless Steel
- US32D (630) Satin Stainless Steel
- CeraMax Ceramic Coating:
 - Graphite Black (C19G)
 - Flat Black (C19)
 - Stormy Grey (CGY)
 - Dark Bronze (CDB)

Functions

Tubular Latch Set with RA, SE, GT, or GS Rose or SH Plate

- Passage, 2-3/8" backset = L461
- Passage, 2-3/4" backset = L471
- Privacy, 2-3/8" backset = L462
- Privacy, 2-3/4" backset = L472
- Single Dummy Left= DL
- Single Dummy Right= DR
- Full Dummy= DL + DR
- Half Passage/Communicating:
 - 2-3/8" backset= L465
 - 2-3/4" backset= L475

Tubular Entry Set with Deadbolt and LA, SF or SH Plate

- 2-3/8" backset = C463
- 2-3/4" backset = C473

Handing required on Single Dummy, Entry, Mortise, Multipoint Functions and Custom sets

Door Thickness

1-3/8" to 1-3/4" (35mm to 44mm)
Thick Door Kits available

Features

- Concealed fixings
- Spring-assisted chassis
- Same lever design with multiple escutcheons and functions to suit multiple applications
- Return to Door design
- TL4 Latches - ADA Compliant



Escutcheon Options



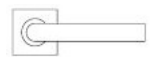
RA Rose
2-1/2" Diameter
(64mm)



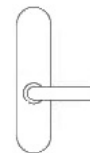
SE Rose
2-3/8" Square
(60mm)



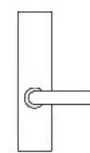
GT Rose
2-1/16" Diameter
(53mm)



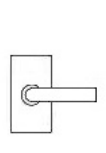
GS Rose
2-1/16" Square
(53mm)



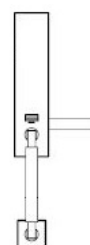
LA Plate
10-1/2" x 2-1/2"
267mm x 63mm



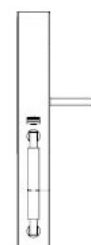
SF Plate
10-1/2" x 2-1/2"
267mm x 63mm



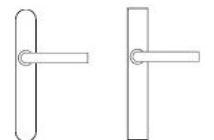
SH Plate
4-1/2" x 2-3/8"
115mm x 60mm



NY/MH Plate
17-1/8" x 2-1/2"
453mm x 63mm



ME/BW Plate
18-1/8" x 2-1/2"
460mm x 63mm



BP/MU Plate
10-1/2" x 1-5/8"
(267mm x 42mm)